

# MONTHLY MEMBERSHIP PROGRESS REPORT

LOCATION INDIA

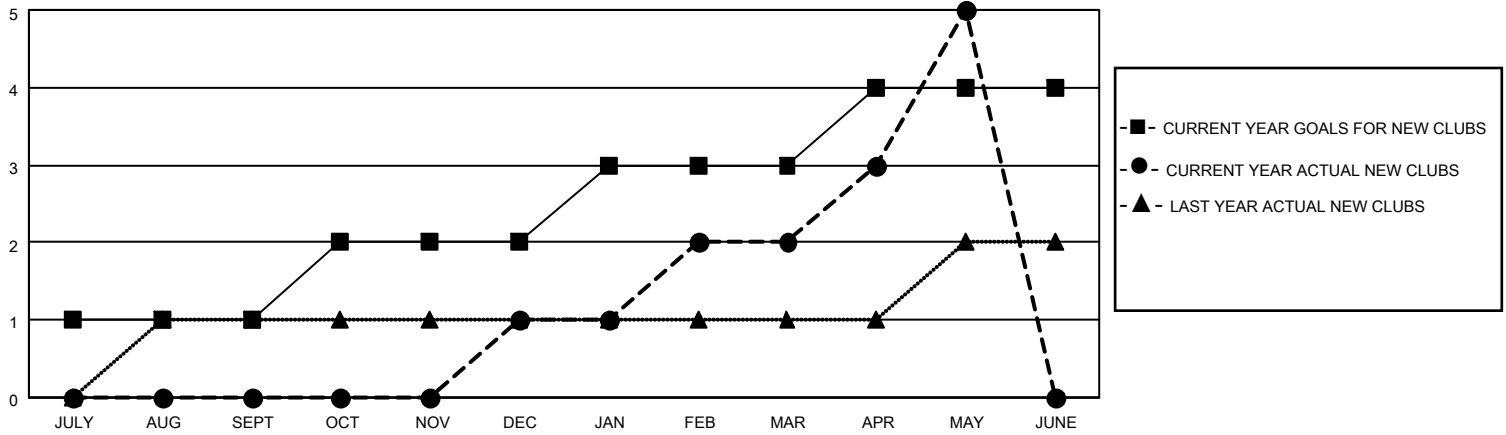
District 324A5

Results as of: 5/31/2021

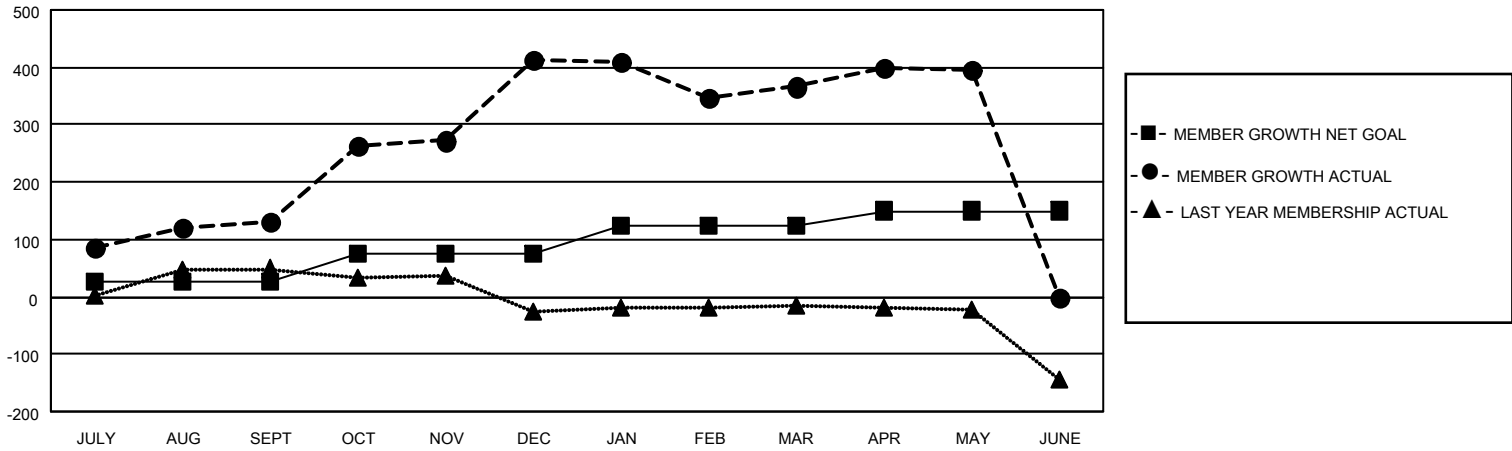
Clubs			
RESULTS FOR 2020-2021			
QUARTER	NEW CLUB GOAL	NEW CLUBS	DROPPED CLUBS
JULY/AUG/SEPT	1	0	0
OCT/NOV/DEC	1	1	0
JAN/FEB/MAR	1	1	3
APR/MAY/JUNE	1	3	0

Members			
RESULTS FOR 2020-2021			
QUARTER	MEMBER GROWTH NET GOAL	MEMBER GROWTH ACTUAL	DROPPED MEMBERS ACTUAL (including transfers)
JULY/AUG/SEPT	25	160	23
OCT/NOV/DEC	50	345	62
JAN/FEB/MAR	50	67	103
APR/MAY/JUNE	25	88	59

**GOALS AND ACTUAL NEW CLUBS CUMULATIVE**



**GOALS AND ACTUAL MEMBERS CUMULATIVE**



DROPPED CLUBS: 3	51 CLUBS OF 64 ADDED 1 OR MORE NEW MEMBERS	<u>GENDER DISTRIBUTION</u> MALE 1,683 (73.56%) FEMALE 605 (26.44%)
<u>DROPPED MEMBERS</u> DECEASED 20 CLUB CANCELLED 77 OTHER 150 <hr/> TOTAL 247	<a href="#">CLICK HERE FOR CUMULATIVE MEMBERSHIP DATA</a>	TOTAL FAMILY UNIT MEMBERS 710 FAMILY MEMBERS PAYING HALF DUES 436